

WEM®
UNDERFLOOR HEATING

WEM Underfloor Heating

In dry construction



WEM Underfloor Heating: just feel well.



WEM Underfloor Heating: just feel well.

WE CREATE COMFORT AND COSINESS

Let comfortable warmth flow into your living space! The WEM under-floor heating can easily and quickly be installed in dry-wall technique. It is perfectly suitable for installation underneath wooden flooring

YOUR PROJECT MATTERS TO US!

WEM stands for sophisticated and well-tried radiant heating systems. You can rely on our experience - we have been active in this special field since 1999.

The customer and his desire for a comfortable and healthy home is in the focus of all our efforts. We will be pleased to answer all your questions and to provide you with detailed advice on your individual project.

- Ideal for wooden floors in new and old buildings
- Easy and quick installation in dry-construction technique
- Good impact sound proofing (-13 dB) improving the spatial sound
- Comfortably resilient when walking on
- Low installed height (40 mm)
- Low weight (ca. 15 kg/m²)
- Short response times
- Easily combinable with the WEM radiant wall and ceiling heating systems
- Ecological material (softwood fibre boards manufactured in environmentally sound wet processes)

WEM[®]
UNDERFLOOR HEATING





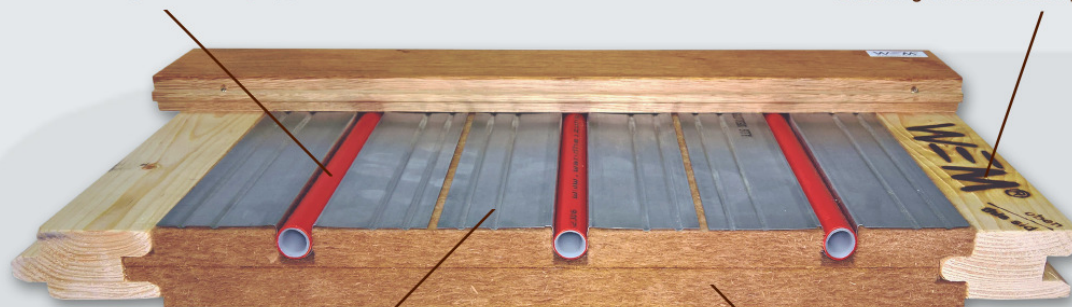
WEM Underfloor Heating

Underfloor heating and insulating system for impact-sound decoupling in wooden plank floors.

Die WEM underfloor heating is a dry system. It consists of a 40-mm-thick wood fibre board that accommodates the thermally conductive plates and the multi-ply composite tube, which has a diameter of 16 mm. In most cases, wooden planks are fitted to the profiled frames that provide for impact-sound decoupling. The suitability of the wooden floor for underfloor heating should be clarified with the manufacturer. In combination with other flooring materials such as tiles, laminate etc., dry-screed overlay such as Fermacell is used.

The tried and tested WEM multi-ply composite tube for heating and cooling applications

Profiled frames for easy fastening of the wooden planks



Thermally conductive plates for a well-balanced heat distribution

Wood fibre boards provide for good thermal insulation and sound proofing

Heating power

The performance of the heating depends on the water temperature, the room temperature and the installed flooring. The following table gives an overview of the heat outputs in combination with the most frequent flooring materials. If you prefer using another material, please contact us.

Indoor temperature [°C]	Heating medium temperature supply / return [°C]	Heating power [W/m²]		
		20mm Oak	20mm Softwood	20mm Fermacell dry screed with tile
18°C	35 / 30	42,5	35	42,5
	40 / 35	60	51	60
	45 / 40	77,5	67,5	77,5
20°C	35 / 30	35	30	35
	40 / 35	52,5	45	52,5
	45 / 40	70	60	70
22°C	35 / 30	27,5	22,5	27,5
	40 / 35	45	37,5	45
	45 / 40	62,5	52,5	62,5
24°C	35 / 30	22,5	17,5	22,5
	40 / 35	38,8	32,5	38,8
	45 / 40	55	47,5	55

Weight

Approx. 15 kg/m², incl. the wood fibre board, wooden frame profile, thermally conductive plate, filling material, tube and water, without flooring

Installed height

40 mm without flooring

Easy installation:



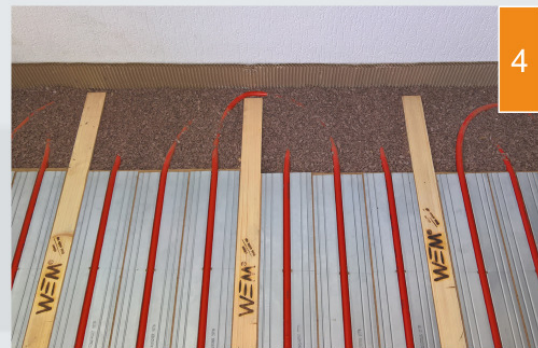
(1) The wood fibre boards and profiled frames are laid.



(2) Thermally conductive plates are laid in the fibre boards.



(3) The tube is inserted in the thermally conductive plates and connected to the heating manifold.



(4) The areas of the tube bends are embedded in filling material.



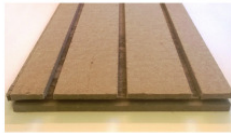
(5) A suitable wooden flooring is installed on top.

You can find detailed installation instructions on our web page at www.wall-heating.com/ufh (see QR Code on the rear page)



This is how it works:
a sophisticated system.

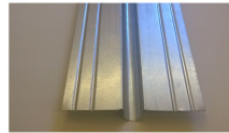
System components



Wood fibre board



Compensation board



Thermally conductive plate



Profiled wooden frame



Composite tube



Filling material



Edge insulating strip

How much underfloor heating surface do I need and how much do I have to pay for it?

To make sure that you know exactly how much underfloor heating surface you need to install, we or our regional partner will prepare an individual design and calculation for your construction project. This design is free of costs and does not involve any obligations on your part. Please ask for our questionnaire to register all data that are needed for the calculation.

Can I combine the underfloor heating with my existing heating system?

It is also possible to connect the underfloor heating to an existing heating system. Radiant heating systems often work with lower water temperatures than radiators. To combine both systems, the temperature for wall, underfloor and ceiling heating systems must to be lowered.

We will propose you a tailored solution for the installation of a WEM radiant heating system.

Everything from a single source.

We provide you with all components and materials that you need for your underfloor heating, including the heating manifold, controls, pump aggregates and everything else. In addition, we offer complete radiating wall-heating systems either for dry installation or for wet installation with plaster cover. Also, ceiling heating systems are available. The scope of delivery always includes all required material from the heating components to clay and lime plasters including clay paints for a nice ambience, everything perfectly matched to each other and provided from a single source.



All-inclusive Service by WEM.



It is your decision!

Therefore, our technical staff and our regional partners will give you tailored advice for your project no matter whether new construction, refurbishment or retrofitting is concerned. We will be pleased to take care of your project irrespective of the type and size of the building in question. Only when you are well informed you will be sure to take the right decision.

And we have the experience and the knowledge.

Our experience in the development and manufacturing of radiant heating systems and clay materials goes back to the last millennium. We have installed our heating systems in the most diverse types of building and if we have to face a new challenge after all these years, it will be a pleasure for us.

The idea of a new, healthy and comfortable style of living is as important to us as it is to you. For this reason, we wholeheartedly support environmentally sound construction.

We are well connected!

Our trained partner companies and our in-house staff will give you and your craftsmen in charge competent advice. You need instructions on site or help for the installation? Do not hesitate to contact and challenge us.

By the way, you can find a contact partner in your area in our list of competent regional partner companies available at www.wall-heating.com/local-partners





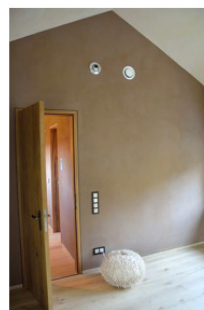
WEM GmbH
Robert-Bosch-Str. 1-7
D-56070 Koblenz

Tel. +49 261 98 33 99 0
Fax +49 261 98 33 99 29
wem@wall-heating.com

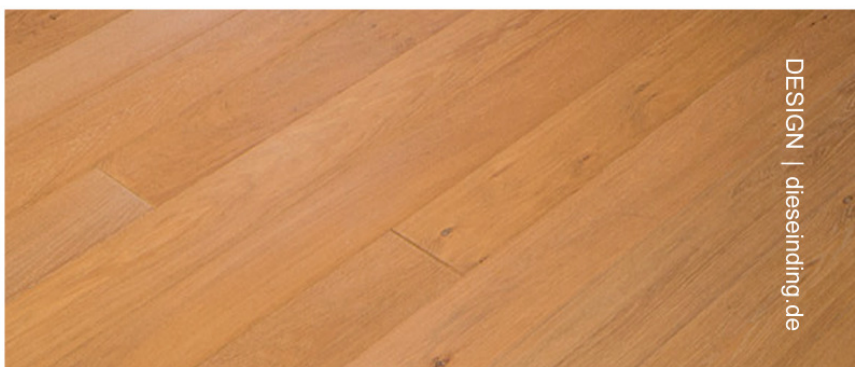
Technical Details



wall-heating.com/ufh



Your specialised dealer for products by WEM



DESIGN | dieseindig.de

www.wall-heating.com